

August 17, 2010

---

## Service Information Letter

August 17, 2010

### **Subject:**

Shimmy Damper Mounting Bracket

### **Applicability:**

Model 208 and 208B with STC10841SC conversion applied.

### **Background:**

Over the past 2 years, Supervan Systems Ltd. has noticed that the shimmy damper mounting bracket assembly has shown signs of fatigue. In response to this condition, Supervan Systems Ltd. has designed an improved shimmy damper mounting bracket assembly which will improve the durability of the design. The replacement of this shimmy damper mount bracket assembly will be mandatory.

### **Discussion:**

The purpose of this Service Information Letter (SIL) is to inform operators and maintenance technicians of a potential failure in the shimmy damper mounting bracket assembly. Figure 1 shows the stress concentration locations that should be inspected prior to each flight. The new design is in the process of being approved and notification of availability will be made per Service Bulletin No. SB-208-1. Regular preflight inspections of the shimmy damper mounting bracket assembly are essential towards preventing a possible failure.

### **Contact:**

Concerns regarding this design update can be addressed electronically by writing to [info@supervansystems.com](mailto:info@supervansystems.com) or by calling 972.382.4402.

August 17, 2010

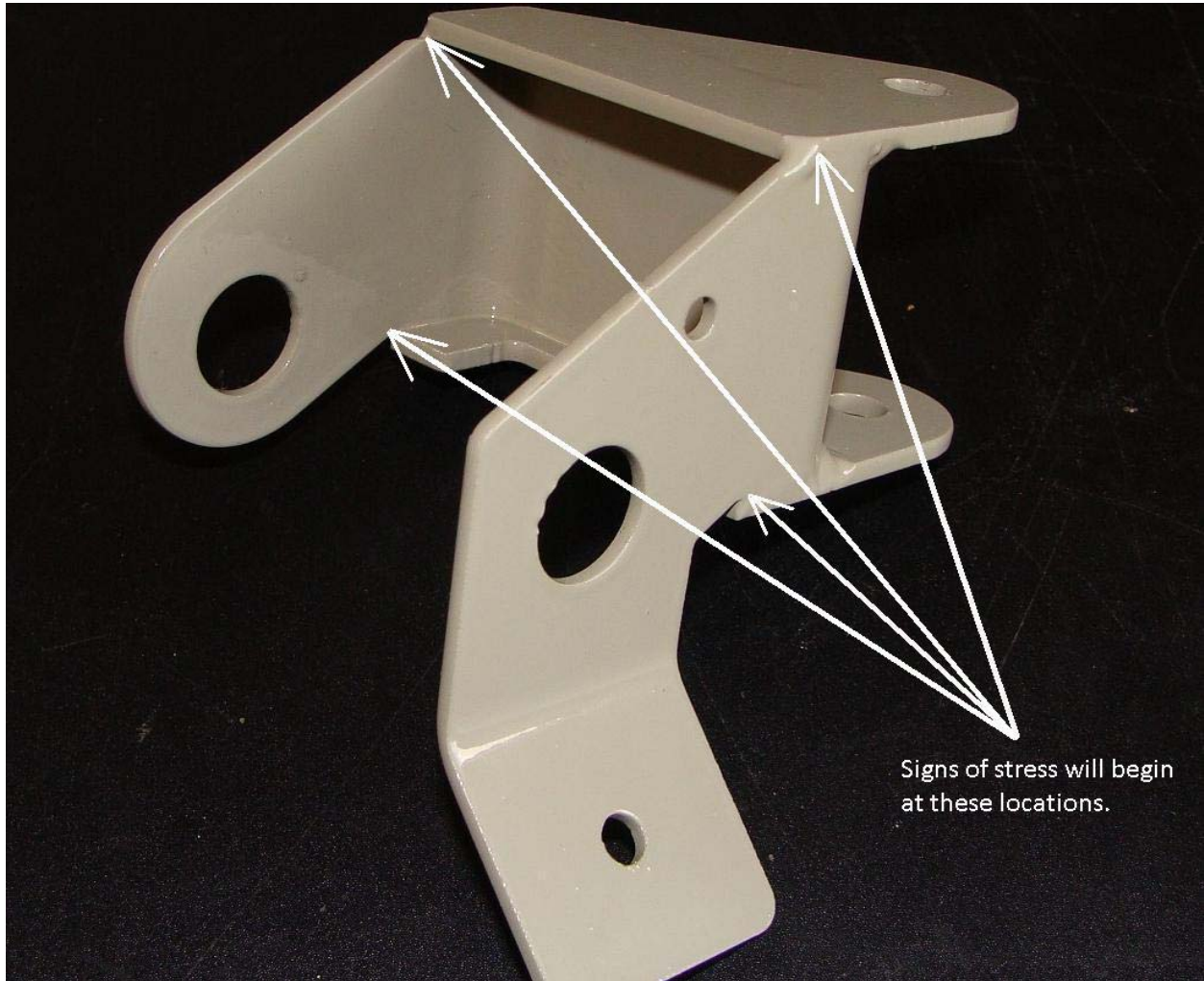


Figure 1 Shimmy Damper Mount Bracket Assembly