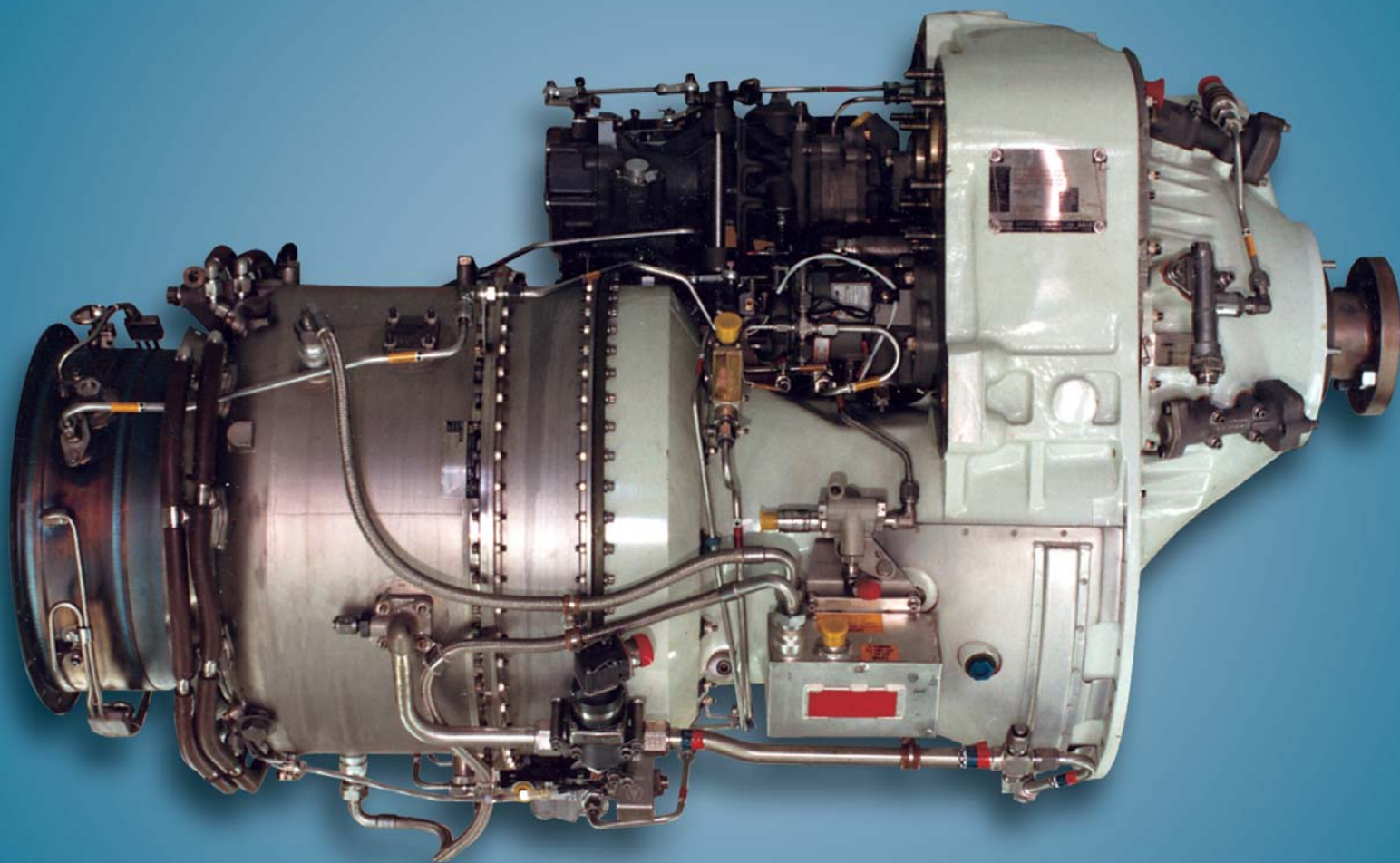
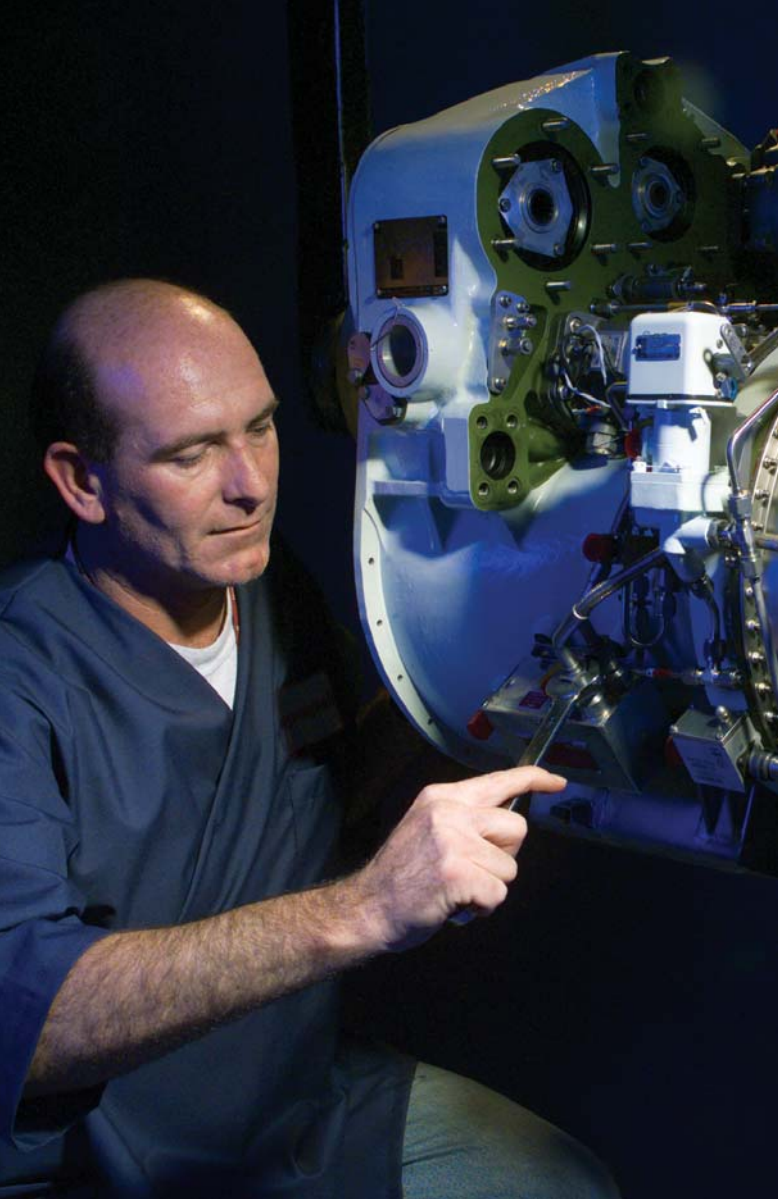


Commercial Warranty for the TPE331-12JR



**Production or Retrofit
Engines for Cessna Caravan**

Honeywell



Commercial Wa

New Spare Engines

Honeywell warrants to the owner that each new spare TPE331-12JR Engine sold for installation on aircraft will at time of delivery be free from defects in material, workmanship and title and will be of the kind and type specified. Warranty shall run to the original purchaser, its successors, assigns and customers when they are owner. This warranty shall expire seventy-two (72) months from the date of shipment by Honeywell or sixty (60) months from the date of initial operation of the new spare Engine on an aircraft or two thousand five hundred (2,500) Engine operating hours after initial operation, whichever first occurs.

New Spare Parts for Engines

Honeywell warrants that new spare parts sold for installation in TPE331 Engines will at the time of delivery be free from defects in material, workmanship and title and will be of the kind and type specified. Warranty shall run to the original purchaser, its successors, assigns and customers when they are owner. This warranty shall expire twelve (12) months from the date of shipment by Honeywell or six (6) months from date of installation of the new spare part in a TPE331 Engine, whichever first occurs. However, the warranty for parts replaced under the Engine warranty shall not extend beyond the date of expiration of the warranty for the given Engine.

Repaired and Overhaul Warranty

Honeywell warrants that Repaired Equipment will at the time of delivery be free of defects in material and workmanship, with respect to replaced parts and repair services. Honeywell warrants that Overhauled Equipment will at the time of delivery be free from defects in material and workmanship. Warranty shall run to the original purchaser, its successor, assigns and customers when they are the owner. This warranty shall expire twenty-four (24) months from the date of shipment of the Equipment by Honeywell or twelve (12) months from the date of the initial operation in an aircraft, whichever first occurs. Honeywell liability for Repair and Overhaul warranty is limited to repairing or supplying replacement "Parts" if found to be defective in the sole discretion of Honeywell.

Original Equipment Engines

Honeywell warrants to the owner that each TPE331-12JR Engine sold for installation on new or used Cessna Caravan aircraft will at time of delivery be free from defects in material, workmanship and title, and will be of the kind and type specified. Warranty shall run to the original purchaser, its successors, assigns and customers when they are the owner. This warranty shall expire seventy-two (72) months from the date of shipment by Honeywell or sixty (60) months from the date aircraft is put into commercial use or two thousand five hundred (2,500) Engine operating hours after initial operation, whichever first occurs.

Warranty for TPE331 Engines

Definitions

As used herein, the following words and phrases have the following meanings:

1. "Honeywell" means Honeywell, Inc. through its Business and General Aviation business.
2. "Owner" means the Federal Aviation Agency (FAA), or its equivalent, registered owner of the aircraft in which the TPE331 Engine is installed at time of warranty claim, or the legal owner of the TPE331 Engine.
3. "Engine" means a TPE331 Engine delivered for commercial use.
4. "Commercial Use" means the operation of the Engines in aircraft licensed by FAA or its equivalent for general civilian and commercial use excluding aerial dusting and spraying and any other type of flying requiring special authorization or dispensation by FAA or its equivalent.
5. "Initial Operation" means the first running of the Engine after obtaining a certificate of airworthiness on the aircraft. "Initial Operation" of a new spare Engine means the first running of the spare TPE331 Engine after installation in the aircraft.
6. "Engine Operating Hours" means the total number of flight hours.
7. "Failure" or "Malfunction" in an Engine or part means breakage or improper function.
8. "Parts" means only those parts of the Engine which are repaired or replaced by Honeywell.

Responsibilities of Honeywell

1. Honeywell's liability is limited to repairing or replacing the engine or part which in the sole discretion of Honeywell, is found to be defective. Warranty coverage includes 100% engine parts replacement plus a labor allowance for component removal and installation not to exceed that specified in the Warranty Labor Allowance Schedule hereof.
2. The correction of any failure or malfunction hereunder shall in no way extend the period of this warranty
3. Any engine or part which is replaced shall become the

property of Honeywell.

4. Any engine or part which is replaced shall become the property of Honeywell.
5. Honeywell reserves the right to make changes in the design, and to add improvements without incurring any obligation to incorporate the same on other engines or parts sold by Honeywell.

Responsibilities of Owner

The following conditions govern the application of this warranty:

1. Owner shall assure that records are maintained which will accurately reflect Engine operating hours and when maintenance was performed. At Honeywell's request, such record shall be provided to substantiate warranty claim.
2. This warranty will not apply if the Engine has been subjected to:
 - a. Any maintenance, overhaul, installation, storage, operation, or use, which is not in accordance with "Honeywell Instructions"; or
 - b. Any alteration or repair by anyone other than Honeywell or its authorized representatives which adversely affects the normal operation and performance of the Engine; or
 - c. Any accident, misuse, neglect, or negligence after delivery by Honeywell; or
 - d. Any tests other than normal production flight tests, unless Honeywell grants prior written approval; or
 - e. Ingestion of foreign material; or
 - f. Any other damages not within the control of Honeywell.
3. Owner shall bear transportation costs of both defective and replacement Engine or part to and from a location designated by Honeywell.
4. Owner must submit a Honeywell warranty form within seven (7) days after discovery of the defect or failure, and return Engine or part for repair or replacement within thirty (30) days after notice.

Limitations

1. ALL OTHER WARRANTIES, WHETHER EXPRESS, IMPLIED OR STATUTORY, SUCH AS WARRANTIES OR MERCHANTABILITY OR FITNESS FOR A PARTICULAR PURPOSE, ARE HEREBY EXCLUDED AND DISCLAIMED TO THE EXTENT THEY EXCEED THE WARRANTIES GRANTED HEREIN. IN NO EVENT SHALL HONEYWELL BE LIABLE FOR CONSEQUENTIAL OR INCIDENTAL DAMAGES.
2. NO AGREEMENT EXTENDING THIS WARRANTY SHALL BE BINDING UPON HONEYWELL UNLESS IN WRITING AND SIGNED BY A DULY AUTHORIZED OFFICER OR REPRESENTATIVE.

Warranty Labor Allowance Schedule for TPE331 Engines

REMOVAL AND INSTALLATION LABOR AT POSTED STANDARD SHOP RATES WILL BE ALLOWED BY HONEYWELL FOR REMOVAL AND INSTALLATION TIME ACTUALLY EXPERIENCED, BUT NOT TO EXCEED THE ALLOWANCE LISTED BELOW. FOR ANY ACCESSORY COMPONENT NOT SPECIFIED BELOW, THE ALLOWANCE IS ACTUAL TIME NOT TO EXCEED ONE-HALF (.5) HOUR.

| COMPONENT | MAXIMUM HOURS ALLOWED | COMPONENT | MAXIMUM HOURS ALLOWED |
|--------------------------------------|-----------------------|--------------------------------------|-----------------------|
| Anti-Ice Lockout Solenoid Valve | 1 | Igniter Plug | 1 |
| Anti-Icing Valve | 1 | Ignition Exciter | 1 |
| Auto Ignition Switch | 5 | Inlet Sensor | 2 |
| Beta Pressure Switch | 1 | NTS Valve | 5 |
| Beta Tube and Set Flight Idle | 1 | Oil Filter Bypass Valve | 1 |
| Chip Detector/Magnetic Drain | 1 | Oil Pressure Regulator | 1 |
| Compensating Resistor | 1 | Oil Pressure Vent Valve | 1 |
| Compressor Seal | 30 | Oil Tank | 2 |
| E.G.T. Thermocouple Harness | 2 | P Transducer | 1 |
| Emission Control Solenoid Valve | 2 | Prop. Shaft Seal | 14 |
| Engine | 53 | Propellor Governor | 6 |
| Feathering Valve | 2 | Propellor Pitch Control | 8 |
| Flow Divider | 2 | Rear Turbine Seal | 11 |
| Fuel Control/Pump | 15 | Single Red line Computer | 1 |
| Fuel Manifold - Primary | 4 | Tailpipe | 6 |
| Fuel Manifold - Secondary | 4 | Torque and/or Temperature Controller | 1 |
| Fuel Pressure Regulator/Start Module | 2 | Torque Limiter Bypass Valve | 1 |
| Fuel Shutoff Valve | 1 | Torque Load Assy | 5 |
| Fuel/Oil Heat Exchanger | 1 | Turbine Scavenge pump | 6 |

For more information about our company or our products, write or call:

Honeywell Aerospace

Business & General Aviation
1944 E. Sky Harbor Circle
Phoenix, AZ 85034
U.S. Toll Free: 1.800.601.3099
International Tel: 602.365.3099
EMEA Toll Free: 00.800.601.30999
EMEA Direct Dial: 420.234.625.500
www.honeywell.com

A60-1151-000-000
March 2010
© 2010 Honeywell International Inc.